



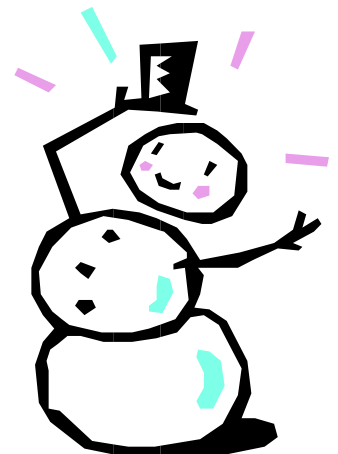
Happy Holidays!

Annual Banquet Date Set

The Licking County Cattlemen's Association Board of Directors are pleased to announce that the annual banquet will take place on February 21, 2012 at the Longaberger Golf Course in Nashport. The banquet will get underway at 6:30 PM.

You can find more details on the banquet on pages 4-5 of this newsletter. We are looking for banquet sponsors. Interested parties should fill out the form on page 4.

Make your reservations today!



Happy Holidays From the LCCA Office

Special points of interest:

- *Director of Ag Named*
- *Banquet Reservations*
- *Membership dues*

LCCA Office
6870 Licking Valley Rd.
Frazeysburg, OH 43822
Ph: 740.828.3832
E Mail: mvgraham@agristar.net



Winter cattle feeding that doesn't break the bank.....

PRINCETON, Ky. - Feeding cattle in the winter can be the single, largest expense for producers. University of Kentucky College of Agriculture beef specialist Roy Burris said this year will not be an exception.

“Due to high input costs, mainly grain and concentrates, this year will present a challenge to producers,” said Burris, stationed at UK’s Research and Education Center in Princeton. “There are several management practices that producers can use to lower feed costs and make their herds more profitable.”

Burris said one big way producers can decrease the amount of hay and feed they use is by extending the grazing season as long as possible.

“Last year at Princeton, we had to begin feeding hay in August,” Burris recalled. “This year grazing might continue until Thanksgiving, due to improved moisture conditions. Pastures that have received nitrogen and been allowed to accumulate growth can be grazed even farther into the winter, thus markedly delaying the start of winter feeding. It’s also a good idea to strip graze accumulated/stockpiled fescue pastures to avoid waste and increase grazing days on those pastures.”

Producers should pregnancy check the spring-calving cow herd now and eliminate the wintering of open cows—or move them to the fall-calving group.

“Thin cows that are pregnant can be put on stockpiled pasture as soon as their calves are weaned to regain body condition prior to the winter feeding period,” Burris explained. “Favorable prices make this a good time to cull unproductive cows.”

Burris said producers should calculate the amount of hay they need to feed cows through the winter. A rough estimate would be about 2 percent of their bodyweight for about 120 days. That would be approximately 25 pounds per day for 120 days or about 3,000 pounds of hay per cow. Multiply 3,000 pounds by the number of cows in the winter herd to estimate the amount of hay needed.

“You might be able to feed less than 120 days, but don’t count on it, and your round bales of hay probably weigh closer to 1,100 to 1,200 pounds rather than the expected 1,500 pounds,” Burris added. “Make sure and get forage analyses on your hay supply, so you can estimate your supplemental feed needs. Supplemental feed purchases can be

made ahead of time for best prices.”

It’s also a good idea to plan ways to minimize feed losses, he said. Producers could consider using a feeding pad (geotextile fabric and gravel) with hay feeders to minimize mud and waste. Cost share programs may be available in some areas for permanent feeding structures. Feed pads or structures will also minimize damage to pastures during the wet winter months.

Burris said producers also need to consider lower cost alternative feeds when purchasing supplements.

“Be aware of the nutrient value of purchased ingredients—things like rice hulls, peanut hulls, cottonseed hulls, etc. may have very little feed value,” he said. “You should know (based on your forage analyses) if you need protein, energy or both and purchase your feed accordingly.”

Group cattle according to their nutritional needs for winter feeding. There are several distinct management groups in most beef herds such as:

Cows nursing calves

- * Weanling replacement heifers
- * Bred yearling heifers
- * Dry, pregnant cows
- * Herd bulls

Most herds will have at least three of these groups which will benefit from being managed separately, Burris said.

Producers need to give more feed to cows after calving to get calves off to a good start and to maintain cows’ body condition.

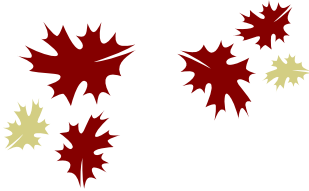


Make plans to attend the LCCA Annual Banquet February 21, 2012.

Reservations for the banquet are due to the LCCA office by February 14, 2012. Info on page 5.



Annual Steak Fry Highlights



THANKS TO EVERYONE
THAT ATTENDED THE LCCA FALL
STEAK FRY. A SPECIAL
THANKS TO



LCCA Board members cook and serve the steaks.



PHIL AND BARB WATTS

FOR HOSTING THE ANNUAL
EVENT.



Fellowship and good food!

If you would be interested in hosting the Fall Steak Fry let the LCCA Office know.



ZEHRINGER HEADS ODNR

Changes have been made in the director positions at the Ohio Department of Agriculture and Ohio Department of Natural Resources.

Gov. John Kasich has announced that ODA Director James Zehringer would become director of ODNR that afternoon. Tony Forshey, the state veterinarian for the past six years, was named interim director of ODA.

Zehringer said he will be dealing with many of the same issues at ODNR, such as water quality management, exotic animals, and pests to crops and woodlots.

“There are a lot of similarities between the agencies and the governor and I thought it was a good fit,” Zehringer said.



Make Plans to Attend the LCCA Annual Banquet

Become a Banquet Sponsor

Listed below are Sponsorship Opportunities:

Event Sponsorship

Program Sponsor: \$150.00

(logo can be placed in the program)

Entertainment Sponsor: \$250.00

Youth Sponsor: \$100.00 (Queen, Princess and Scholarship)

General Sponsorship

Platinum: \$250.00 (Receive 2 meal tickets)

Gold : \$100.00 (Receive 1 meal ticket)

Silver : \$50.00

Bronze: \$25.00

Name: _____

Phone: _____

Company: _____

I am interested in serving as a sponsor of the LCCA Annual Banquet. I would like to sponsor :

Please find enclosed my payment of: _____

Please send payment in full to LCCA at 6870 Licking Valley Rd., Frazeyburg, OH 43822.

Thanks for your support of the LCCA!

Auction to Be Held

The LCCA will once again be holding a live and Chinese raffle with the proceeds going to the scholarship program. If you would like to donate an item (s), please notify the LCCA Office so that we can make the membership aware of the items that will be up for auction.

Applications Due

If you are interested in becoming the next LCCA Princess or Queen of beef or even the scholarship recipient, then make sure that you get your application in **NO** later than February 1, 2012. You can go on to the LCCA website, and print off the application. Then mail it into the LCCA office at: 6870 Licking Valley Road, Frazeyburg, OH 43822. If you have any questions, contact Valerie Graham at (740)-828-3832. Interviews will take place prior to the banquet on February 21, 2012.

LCCA Board of Director

The LCCA Board of Directors is seeking nominees to serve on the LCCA Board of Directors. At this time Linda Weiler has decided to not run for the position. Board members will serve a two year term and meet on a monthly basis. Any interested party should contact the LCCA Office at mvgraham@agristar.net/740.828.3832.

February 21, 2012

The Licking County Cattlemen's Association invites you to be a part of the 2012 Annual Banquet.

The annual banquet will take place at 6:30 PM at the Longaberger Golf Course located at One Long Drive in Nashport.

We will have the crowning of the queen and princess and the naming of the scholarship winner. A Chinese raffle and live auction will also take place with the proceeds benefiting the Licking County Cattlemen's Scholarship fund.

Entertainment will be provided by Jay Hendren, the country's funniest farmer. Jay has traveled the nation appearing in comedy clubs and corporate events but has never forgot his roots growing up on a family farm.

Reservations:

\$21.00 –Prepaid for members
\$26.00– Members at the door
\$10-Kids 3-10

\$31– Prepaid for Non-members
\$36– Non-members at the door
\$10-2012 Membership Dues

Reservations:

Name: _____ E Mail: _____

Names of Attendees: _____

Adults attending: _____ x (\$21.00 or \$31.00) = _____

Kids: _____ x \$10.00= _____

Total due: _____



Please return to the LCCA Office at 6870 Licking Valley Rd., Frazeytsburg, OH 43822. All reservations should be received by February 14, 2012. Checks payable to the LCCA. Questions: 740.828.3832/mvgraham@agristar.net



Industry News

Efficient Beef Production, What does it mean in 2012?

If you are intrigued with the title of this piece, then you won't want to miss the 2012 Ohio Beef Cattle School series beginning on January 26, 2012 and continuing on the Thursday evenings of February 9, February 16 and March 1. Following a theme of "The New Normal," each session will be broadcast locally by many Ohio Extension offices via an internet link, and will focus on optimizing efficient beef production in a rapidly changing business and consumer environment. Nothing is sacred as we explore trends in reproduction, genetics, feeds and feeding, targeted marketing, and the opportunities afforded by backgrounding calves versus finishing them in Ohio feedlots.

Specific topics and speakers are still being finalized, but will include industry respected individuals from across the Midwest. Host locations are also still being secured. If interested in attending, contact your local Ohio State University Extension office to ask if their winter programming plans include hosting the Ohio Beef Cattle Schools.

Does AI Cost or Pay? - Dr. Les Anderson, Beef Extension Specialist, University of Kentucky

Last week we compared the costs per pregnancy for natural service and for a breeding system that included estrus synchronization and AI (ESAI). Considering the current costs of feed and pasture, the cost per pregnancy for natural service ranged from \$38 to \$72 when producers ran their bulls with 25-30 cows and the purchase price of the bull ranged from \$1,500 to \$3,000. The cost per pregnancy of the more popular

ESAI protocols is from \$65-75 depending mainly upon the conception rate to AI. Therefore, if the average cost per pregnancy is about \$50, then using ESAI will add \$15 to \$25 to our costs of production. The question then becomes, does using ESAI increase our productivity enough to overcome this added cost of production.

Little data can be found in the literature that examines the return on investment of incorporating estrus synchronization and AI. We designed a trial to determine if implementation of estrus synchronization and AI is cost effective and impacts net return. Crossbred postpartum cows ($n = 351$) were assigned to one of two breeding systems. Approximately two-thirds of the cows ($n = 251$) were subjected to an estrus synchronization protocol suitable for a fixed-time insemination (SYNC). Estrus was synchronized using the CO-Synch estrus synchronization protocol. In short, cows were administered gonadotropin-releasing hormone (GnRH; 100 ug; Cystorelin®, Merial) and 7 days later were administered 25 mg of prostaglandin F2 α (PG; Lutalyse®, Pharmacia & UpJohn, Kalamazoo, MI). Cows were administered a second injection of GnRH and were artificially inseminated 48 hours after PG. Ten days later, cows were exposed to natural service for 50 days. Bull-to-cow ratio was 1:50 females in the SYNC group. The remaining cows ($n = 100$) were exposed to natural service for 60 days (NAT). The bull-to-cow ratio in the NAT treatment was 1:25. The bull-to-cow ratio was different between the SYNC and NAT groups because we anticipated that approximately one-half of the cows in the SYNC group would conceive to AI. To verify date of conception, pregnancy was diagnosed using transrectal ultrasonography.

To determine return on investment, all costs associated with the estrus synchronization and AI were recorded and are summarized in Table 1. Labor was determined by recording amount of time required to bring the cattle to the corral, work the cows and then return them to the breeding pastures. Four laborers were used, three trips through the chute, and an hourly wage of \$7.00 per hour. To determine differences in revenue, calves were weighed at weaning and the differences in weight available to market were determined. Calves from both treatments were given a value of \$1.35 per pound.



Visit the OSU Beef Team calendar of meetings and upcoming events at:

<http://beef.osu.edu/calendar>



**Happy Holidays from
the LCCA!**



Licking County Cattlemen's Association

2012 Membership Form

Activities supported or sponsored by the LCCA:

- Website at <http://www.lickingcountycattlemen.com>
 - Annual banquet & Steak Fry
- Quarterly Newsletter & Monthly Calendar of Events
 - Youth Scholarship Awards
- Serving Refreshments at Various Community Events
 - Membership Directory
- Licking County Beef Queen and Princess Contest
- Check-in Breeding Cattle for the junior. & open shows at the Hartford Fair.
 - Hospitality Meal for the Steer Sale at the Hartford Fair
 - Jr. Fair Awards
- Calf Selection, Grooming & Showmanship Clinics

2012 Membership Fees: 1 year—\$10.00

Type of membership: Beef Producer _____ Affiliate _____

Name: _____

Name of Operation/Business: _____

Address: _____

City: _____ State: _____ Zip: _____

Telephone #: Home: (____) _____ Cell (____) _____ Work (____) _____

E-Mail: _____

Recruited By: _____

_____ New Member _____ Renewal

Do you wish to receive the quarterly by: _____ E-mail _____ Paper Copy

Beef Specialty: Seed Stock _____ Cow/Calf _____ Club Calf _____ Feed Lot _____

Directions to your operation: _____

Make Checks Payable to: Licking County Cattlemen's Association
Mail to: 6870 Licking Valley Road, Frazeyburg, Ohio 43822

Check out our website at:
<http://www.lickingcountycattlemen.com>

Officers

President –

Roger Lees / (740-928-3828)

Secretary/Treasurer-Valerie Graham
(740-828-3832)

Directors

Alan Watson / (740-973-4802)

Steve Davis / (740-522-4983)

Jim Dickson / (740-745-2321)

Tad Dodderer / (740-967-4740)

Dave Felumlee / (740-763-4616)

Linda Weiler / (740-366-5482)

Ben Whitehead / (740-587-3868)

Travis Binckley (740-787-2495)

Newsletter

Valerie Graham (740) 828-3832

Calendar of Events

Valerie Graham (740) 828-3832

LCCA
6870 Licking Valley Rd
Frazeyburg, OH 43822

To:



Upcoming Events:

2011

December 25, 2011 Merry Christmas

2012

January 1, 2012 Happy New Year

February 1, 2012 Queen, Princess and Scholarship Applications due to the LCCA Office

February 14, 2012 Reservations due to the LCCA Office for the Annual Banquet

February 21, 2012 Annual LCCA Banquet at 6:30 PM

“The Licking County Cattlemen’s Association’s mission is to represent the interest of its producers, foster profitability, sustainability and stewardship across the beef industry through promotion, producer education and political action.”